

Project Name:	Construction of Processing Facility
Location:	Abad Santos, Sta. Monica, Surigao del Norte
ABC:	Php 600,000.00

BILL OF QUANTITIES

Item No.	Scope of Work	Quantity	Unit	Unit Cost	Total
B.5	Project Billboard/SignBoard	1.00			
A. 1.1(3)	Construction of combine field office & Laboratory & Living Quarters Building for the Engineers (40 sq.m)	1.00			
100	Clearing and Grubbing	42.00			
803(1)a	Structure Excavation	3.87			
804(4)	Gravel Fill (Bedding)	6.00			
902(1)a	Reinforcing Steel (Deformed), grade 40	1,103.30			
900(1)	Structural Concrete (Class "A" ,28 days)	7.74			
1046(2)a1	Masonry Works	45.58			
1005	Sliding Glass Windows with Aluminum Screen	3.00			
1006	Doors	3.00			
1027	Cement Plaster Finish	45.58			
1003(1)a1	Ceiling	42.00			
1032(1)a	Painting Works(Masonry/Concrete)Acrylic Finish	56.83			
1032(1)c	Painting Works (Steel)	9.60			
1047	Structural Steel	496.20			
1014(1)b2	Pre-Painted Metal Roofing, 0.5mm thk. (Rib Type)	42.00			
1002	Plumbing Works	1.00			
1018(2)	Tile Works	10.66			
1101	Wires & Wiring Devices	1.00			
1102	Power Panel Board and Circuit Breakers	1.00			
903(2)	Formworks & Falseworks	1.00			
GRAND TOTAL					

PREPARED BY:



DEPARTMENT OF AGRICULTURE

RFO XIII - CARAGA
CAPITOL SITE, BUTUAN CITY

CONSTRUCTION OF PROCESSING FACILITY

Abad Santos, Sta. Monica, Siargao, Surigao del Norte

APR 11 2017
AGRI. JUSTIFICATION LETTER
CONSOLIDATED PURCHASE ORDER
NO. 1179
APR 11 2017
Check AOA Others (Please specify) _____
TIN/Employee No. _____
CDS/HRMS No. _____



Republic of the Philippines
 DEPARTMENT OF AGRICULTURE
 Caraga Region
 Talaue, Zamboanga City
 Tel. No. (088) 322-2002, Tadda No. (088) 341-1114

Project Name: Construction of Processing Facility
 Location: Abala Station, Sta. Maestra, Zamboanga, SOA
 Implementing Agency: DA-Caraga Region
 Development Partner:
 Construction Support
 Brief Description:

Client:
 Fund Source:

Project Details

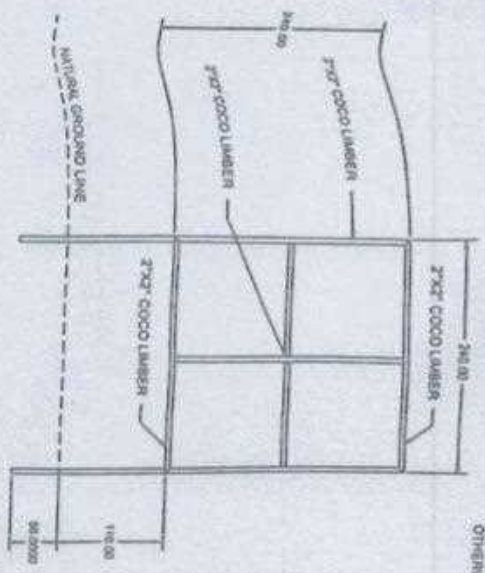
Project Date		Project Status				
Duration	Started	Target at/Before Completion	Percentage Achieved to Date	Cost Committed	Balance	Date of Completion
60 C.D.						

For particulars or consultation about this project, please contact Regional Office or Client which has social jurisdiction on this project.

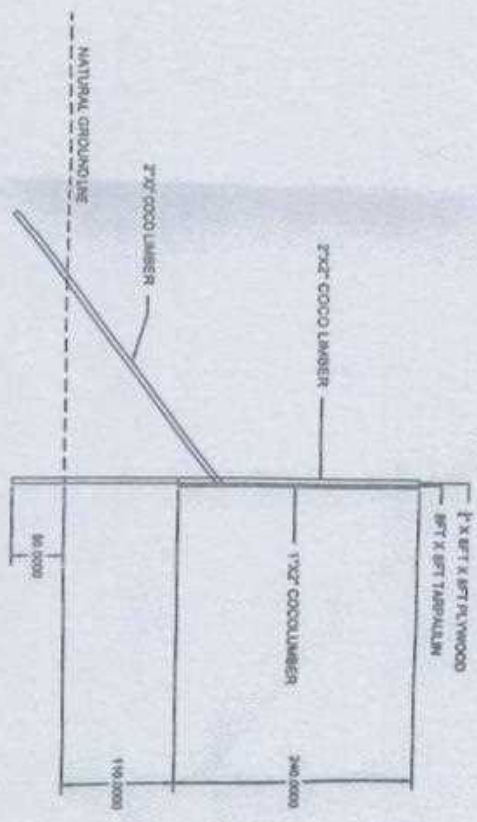
COA Regional Office No. 02 - Zamboanga
 Address: SOUTH MONTILLA ROAD, ESTEROS, MONTILLA CITY
 Contact No. (088) 342-2867 or over COA's Customer Desk at (015) 219-1115

FONT COLOR	: BLACK
RESOLUTION	: 72dpi
FONT	: HELVETICA
FONT SIZE	: 12
SUB-APPLICATION	: 1" x 1"
	: 240.00

PROJECT BILLBOARD DETAILS
 NOT TO SCALE



FRAMING DETAILS
 SCALE: 1:50
 MTS.



LEFT & RIGHT SIDE ELEVATION
 SCALE: 1:50
 MTS.

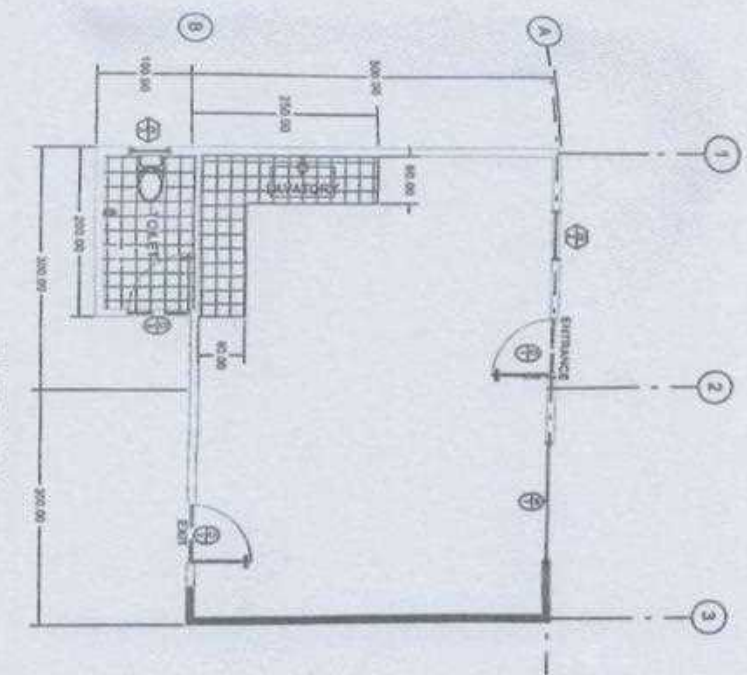
Approvers	Project Title	Prepared by	Checked & Reviewed by	Submitted by	Noted by	Recommended by	Approved by	Sheet Content	Sheet No.	
PROJECT TITLE Construction of Processing Facility Abala, Zamboanga City		ENGR. ROYAL S. MEDINA ENGINEER	ENGR. VISSALVIN B. LIMAS ENGINEER III	ENGR. JESSALVIN B. LIMAS ENGINEER III	ENGR. JESSALVIN B. LIMAS ENGINEER III	MARCOY M. DELA CRUZ Chief-Field Operations Div.	REBECCA B. MANTUA RTD for Operations	MOCKY H. SANGALEN Regional Executive Director	Project Billboard Details	1 18

ALL DIMENSIONS ARE IN CENTIMETERS UNLESS OTHERWISE SPECIFIED

Construction of Processing Facility
 Abad Santos, Sta. Monica, Surigao del Norte
 P11,400,000.00

BILL OF QUANTITIES

Item No.	Scope of Work	Quantity	Unit	Unit Cost	Total
8.5	Protect Wallboard/Synboard	1.00	sqm		
A.1.1(1)	Construction of combine field office & Laboratory & Taring Quarters Building for the Experiment (40 sqm)	1.00	(units/sqm)		
110	Clearing and Grubbing	42.00	sqm		
101(11a)	Structure Excavation	3.82	cu m		
801(4)	Gravel fill (bedding)	6.00	sqm		
900(11a)	Reinforcing Steel (Definied grade 40)	1,303.30	kg		
900(12)	Structural Concrete (Class "A, 28 days)	7.24	cu m		
1006(2) a 1	Masonry Work	45.58	sqm		
2005	Sliding Glass Windows with Aluminum Section	3.00	sqm		
1006	Doors	3.00	sqm		
1027	Cement Plaster Finish	85.58	sqm		
1003(1) a 1	Ceiling	42.00	sqm		
1012(1) a	Painting Works (Masonry/Concrete/ferrous Iron)	56.83	sqm		
1012(1) b	Painting Works (Steel)	9.60	sqm		
3047	Structural Steel	436.20	kg		
3014(1) b 1	Pre-painted Metal Roofing, 0.5mm thk. (WB Type)	42.00	sqm		
1003	Furniture Work	1.00	(unit/sqm)		
1018(2)	Tile Works	10.66	sqm		
1101	Wiring & Wiring Devices	1.00	(unit/sqm)		
1102	Power Panel Board and Circuit Breaker	1.00	(unit/sqm)		
901(2)	Furniture & Fixtures	1.00	(unit/sqm)		
	GRAND TOTAL				

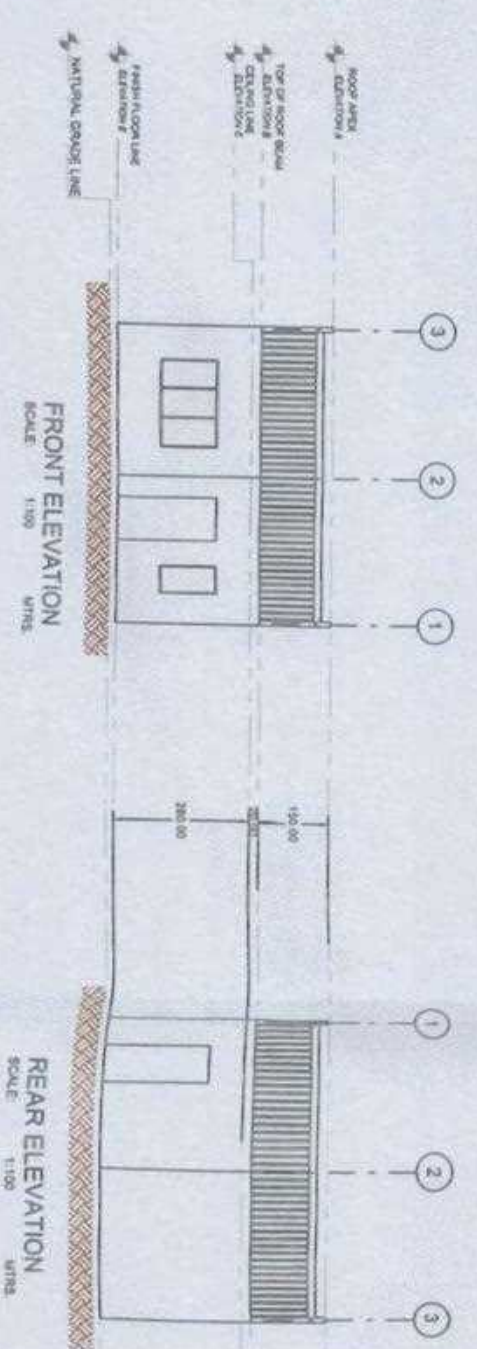
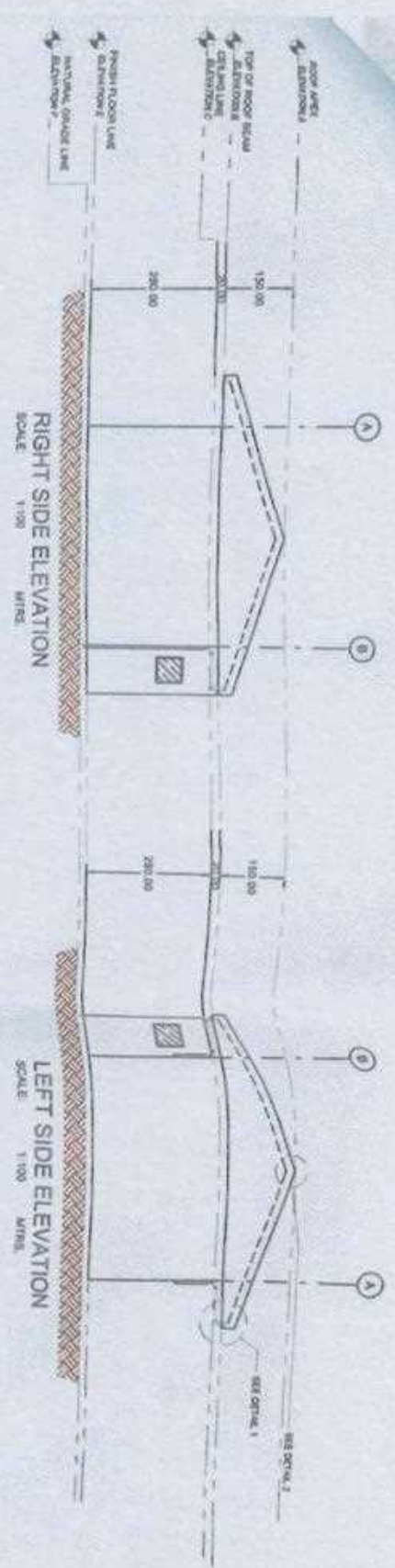


NOTE:
 ALL DIMENSIONS ARE IN CENTIMETERS UNLESS OTHERWISE SPECIFIED

Republic of the Philippines
 DEPARTMENT OF AGRICULTURE
 2FO XII, Capitol Site, Davao City

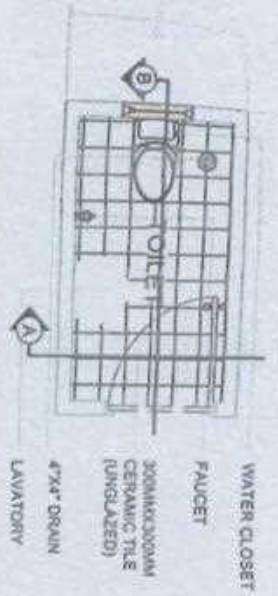
Project Title Construction of Processing Facility	Prepared by ENGR. JAMES S. MENDOZA	Checked & Reviewed by ENGR. MARGALYN B. LIMAS	Supervised by ENGR. RAFAEL G. MUYALLES	Noted by MELDON A. MENDOZA	Recommended by RENECCA R. MENDOZA	Approved by MELDON A. MENDOZA	Shall Center Floor Plan	Sheet No. 2/10
------------------------------------------------------	---------------------------------------	--------------------------------------------------	-------------------------------------------	-------------------------------	--------------------------------------	----------------------------------	----------------------------	-------------------

NOTE
ALL DIMENSIONS ARE IN CENTIMETERS UNLESS OTHERWISE SPECIFIED



of the Proprietary MT OF ARCHITECTURAL 2010, Bikaner City	Project Title Construction of Housing Colony	Prepared by ENGR. JAYESH K. MEHTA	Checked & Reviewed by ENGR. JESSICA LYN B. LAMAS	Submitted by ENGR. JESSICA LYN B. LAMAS	Prepared by HETU D. BANSAL Chief Architect	Recommended by RESHMA K. SHARMA RTD for Operations	Approved by MOH. ENR. Regional Director	Sheet Content Front Elevation Rear Elevation Left Side Elevation Right Side Elevation	Sheet No. 3/10
-----------------------------------------------------------------	----------------------------------------------------	--------------------------------------	-----------------------------------------------------	--------------------------------------------	--------------------------------------------------	----------------------------------------------------------	-----------------------------------------------	---------------------------------------------------------------------------------------------------	-------------------

COMFORT ROOM LAYOUT



- WATER CLOSET
- FAUCET
- 300MM X 300MM CERAMIC TILE (UNGLAZED)
- 47x47 DRAIN LAVATORY



DETAIL 1



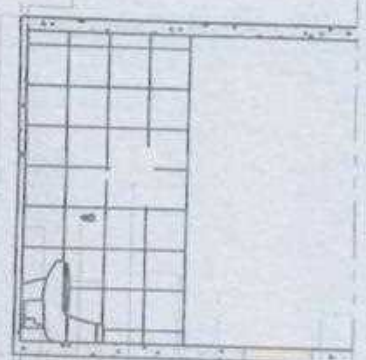
DETAIL 2

NOTE
ALL DIMENSIONS ARE IN CENTIMETERS UNLESS OTHERWISE SPECIFIED.

DESCRIPTION	ELEVATION (m)
Basin/Bowl	103.80
Elevation A	102.80
Elevation B	102.80
Elevation C	102.50

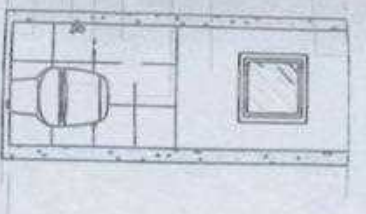
DESCRIPTION	ELEVATION (m)
Elevation D	102.10
Elevation E	100.10
Elevation F	100.00

- CEILING LINE
ELEV. @ 2.50 m
- FINISH FLOOR LINE
ELEV. @ 0.10 m
- NATURAL GRADE LINE
ELEV. @ 0.00 m



SECTIONAL ELEVATION B

- MARINE PLYWOOD CEILING COVER
- PLAIN CEMENT PLASTER IN PAINT FINISH, WHITE
- 300MM X 300MM CERAMIC TILE (GLAZED)
- LAVATORY
- WATER CLOSET
- FAUCET
- 300MM X 300MM CERAMIC TILE (UNGLAZED)



SECTIONAL ELEVATION A

TOILET DETAILS
SCALE: 1 : 1000 M

Philippines	Project Title	Prepared by	Checked & Reviewed by	Submitted by	Noted by	Recommended by	Approved by	Sheet Content	Sheet No.
MR. AGUSTIN, TULIE 1 Sta. Buisan City	Construction of Processing Facility	ENGR. ANTONIO S. DELOS ANGELES II	ENGR. JESSALYN B. LIMAS	ENGR. JOSE L. ESCOBAR	MR. JOY A. DELA CRUZ	MR. JOY A. DELA CRUZ	MR. JOY A. DELA CRUZ	Sectional Elevation	1 10

NOTE:
ALL DIMENSIONS ARE IN CENTIMETERS UNLESS
OTHERWISE SPECIFIED

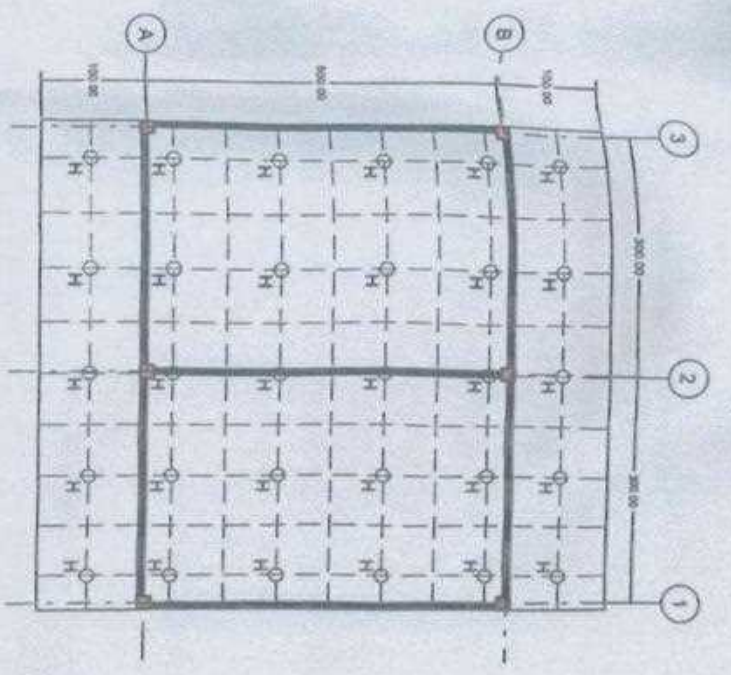
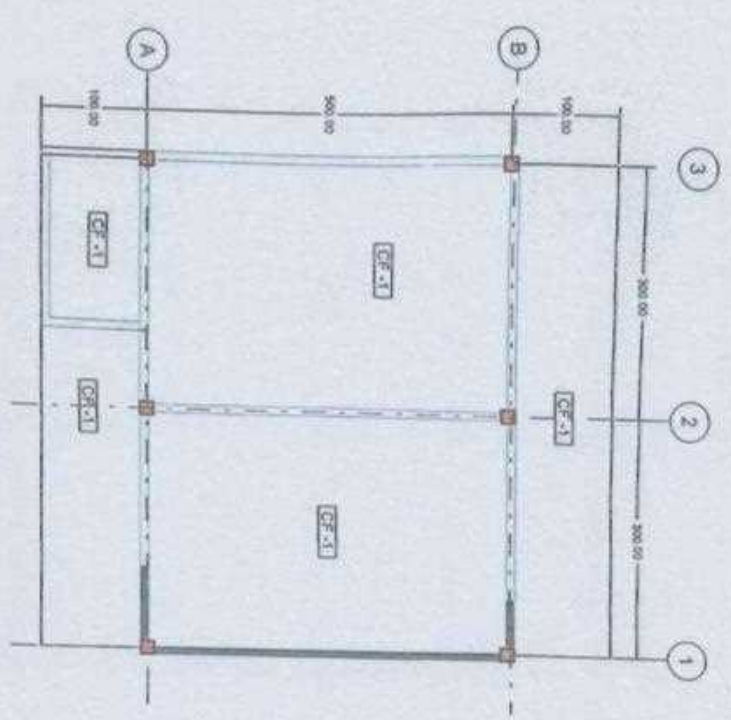
NO. OF SET	1 SET	ENTRANCE DOOR, 1800 X 2100 (200) WOOD DOOR DOOR KNOB W/ COMPLETE LOCK SET AND HINGES	NO. OF SET	1 SET	EXIT DOOR, 800 X 2100 (200) WOOD DOOR DOOR KNOB W/ COMPLETE LOCK SET AND HINGES	NO. OF SET	1 SET	COOL DRT MODUL DOOR, 800 X 1900 (190) PVC DOOR DOOR KNOB W/ COMPLETE LOCK SET AND HINGES
DESCRIPTION	1000 X 120 (2) SLIDING WINDOW WITH STEEL GRILLS	NO. OF SET	1 SET	1200 X 800 (2) SLIDING WINDOW WITH STEEL GRILLS	NO. OF SET	1 SET	1200 X 800 (2) SLIDING WINDOW WITH STEEL GRILLS	

SCHEDULE OF DOORS AND WINDOWS

SCALE: NTS

Prepared by: ENGR. SWAIN S. JACOBS 	Checked & Reviewed by: ENGR. JESSICA LYNN B. LAMAS 	Supervised by: ENGR. JESSICA LYNN B. LAMAS 	Drawn by: M. JACOBS 	Recommended by: RES. CL. M. JACOBS 	Approved by: M. JACOBS 	Special Consultant: Schedule of Doors and Windows 	
Project Name: Construction of Processing Facility Site: Abilene, TX	Prepared by: ENGR. SWAIN S. JACOBS 	Checked & Reviewed by: ENGR. JESSICA LYNN B. LAMAS 	Supervised by: ENGR. JESSICA LYNN B. LAMAS 	Drawn by: M. JACOBS 	Recommended by: RES. CL. M. JACOBS 	Approved by: M. JACOBS 	Special Consultant: Schedule of Doors and Windows

NOTE
 ALL DIMENSIONS ARE IN CENTIMETERS UNLESS
 OTHERWISE SPECIFIED

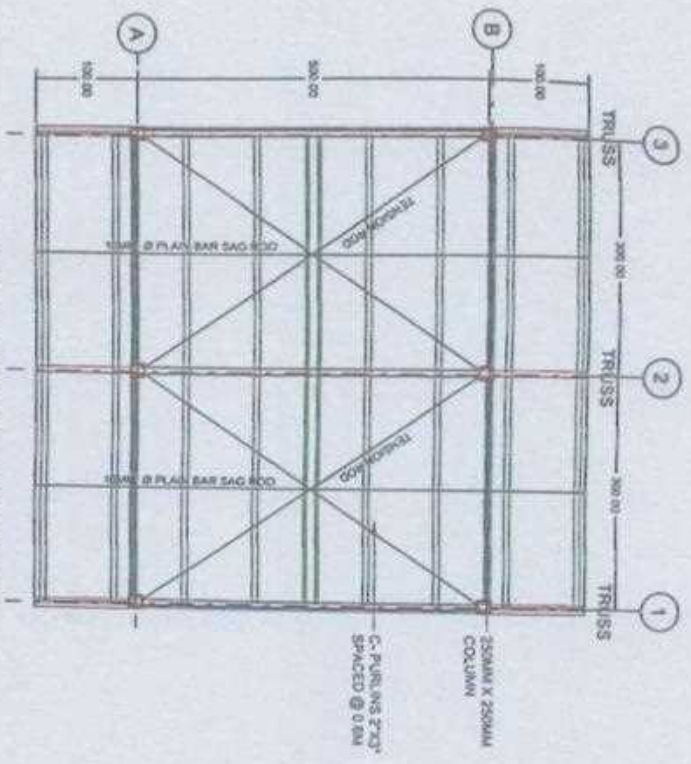


Republic of the Philippines DEPARTMENT OF AGRICULTURE 970 ZILM, Capitol Site, Quezon City	Project Title: Conversion of Processing Facility	Prepared by: ENGR. JOYCEL M. MENDOZA ENGR. III	Checked & Reviewed by: ENGR. THESSA LYN B. LAMAS ENGINEER III	Submitted by: ENGR. JOYCEL M. MENDOZA CHIEF, PLED	Noted by: ENGR. JOYCEL M. MENDOZA CHIEF, PLED	Recommended by: REBECCA M. MENDOZA RTD of Operations	Approved by: ASLAN M. MARQUESEN Regional Executive Director	Sheet Content: Reflected Ceiling Plan Ceiling Support Details	Sheet No.: 7 10
-------------------------------------------------------------------------------------------------	--------------------------------------------------------	------------------------------------------------------	---------------------------------------------------------------------	---------------------------------------------------------	-----------------------------------------------------	------------------------------------------------------------	-------------------------------------------------------------------	---------------------------------------------------------------------------	-----------------------

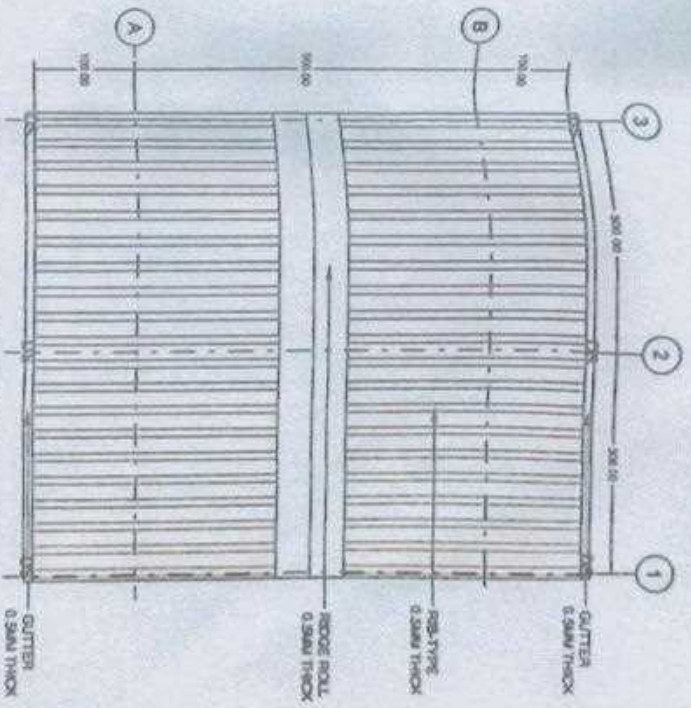
Approval	Approved
IAN	Approved
Attendance	Documentation/Photos
Minutes/Signatures	Minutes/Signatures
Minutes	

L'ABRACAO ISLAND	
Prepared by	Approved by
MF02/22/2	
Amount	

NOTE:
ALL DIMENSIONS ARE IN CENTIMETERS UNLESS OTHERWISE SPECIFIED

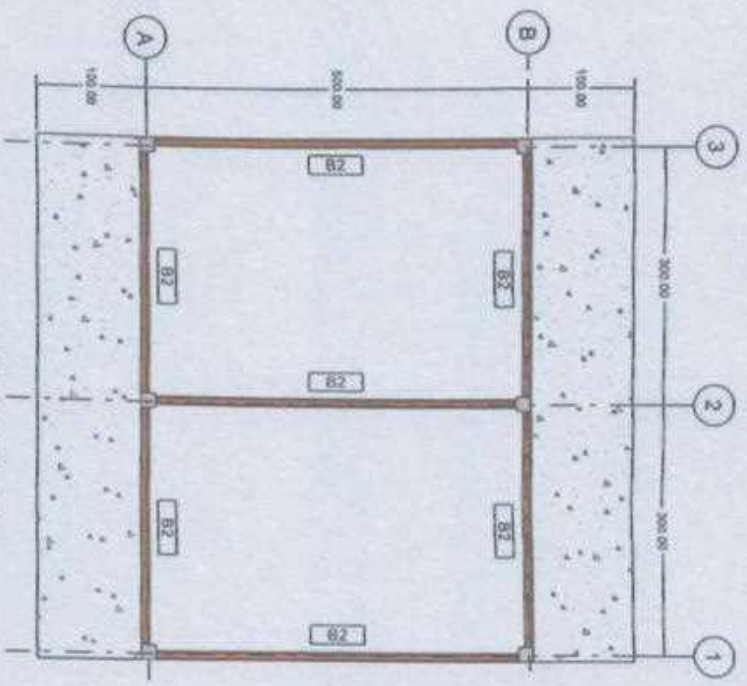


ROOF FRAMING PLAN
SCALE: 1 : 1000 M

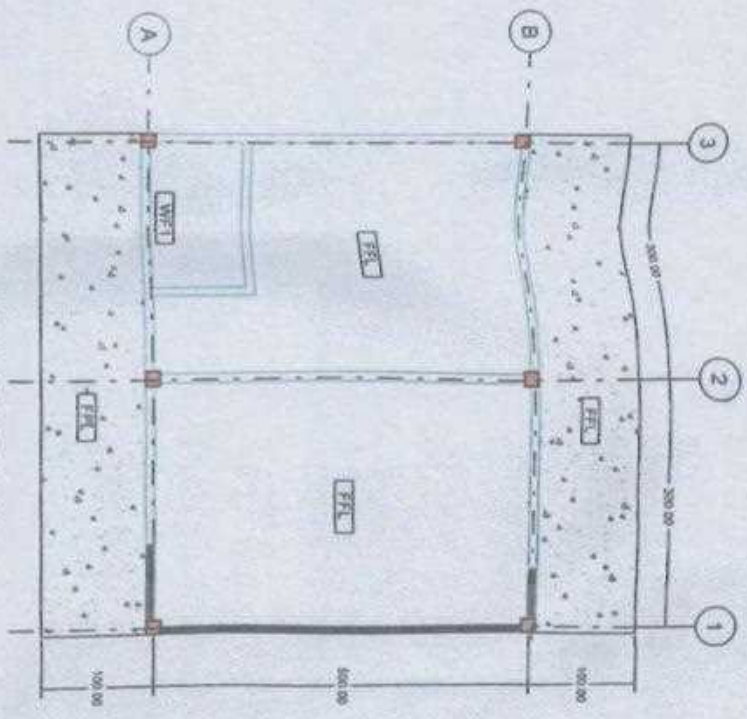


ROOF PLAN
SCALE: 1 : 1000 M

Republic of the Philippines DEPARTMENT OF AGRICULTURE PRO JBL Capad Sta. Balan City	Project Title: Construction of Processing Facility	Prepared by: ENGR. <i>[Signature]</i> MARCOS	Checked & Reviewed by: ENGR. <i>[Signature]</i> MESA-LYN B. LIMAS ENGINEER II	Submitted by: ENGR. <i>[Signature]</i> DINA R. DELA ROSA	Noted by: MR. <i>[Signature]</i> MELVIN B. DELA ROSA Chief-Procurement Div.	Recommended by: REBECCA M. MORALES RTD for Operations	Approved by: ENGR. <i>[Signature]</i> JAYSON M. BAWEN EN Regional Extension Director	Sheet Content: Roof Framing Plan Roof Plan	Sheet No. 8 18
-------------------------------------------------------------------------------------------	----------------------------------------------------------	----------------------------------------------------	----------------------------------------------------------------------------------------	----------------------------------------------------------------	--------------------------------------------------------------------------------------	-------------------------------------------------------------	-----------------------------------------------------------------------------------------------	--------------------------------------------------	----------------------



BEAM PLAN
SCALE: 1 : 1000 M



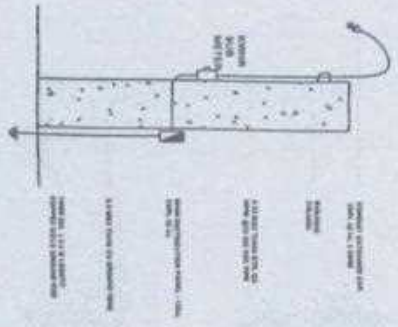
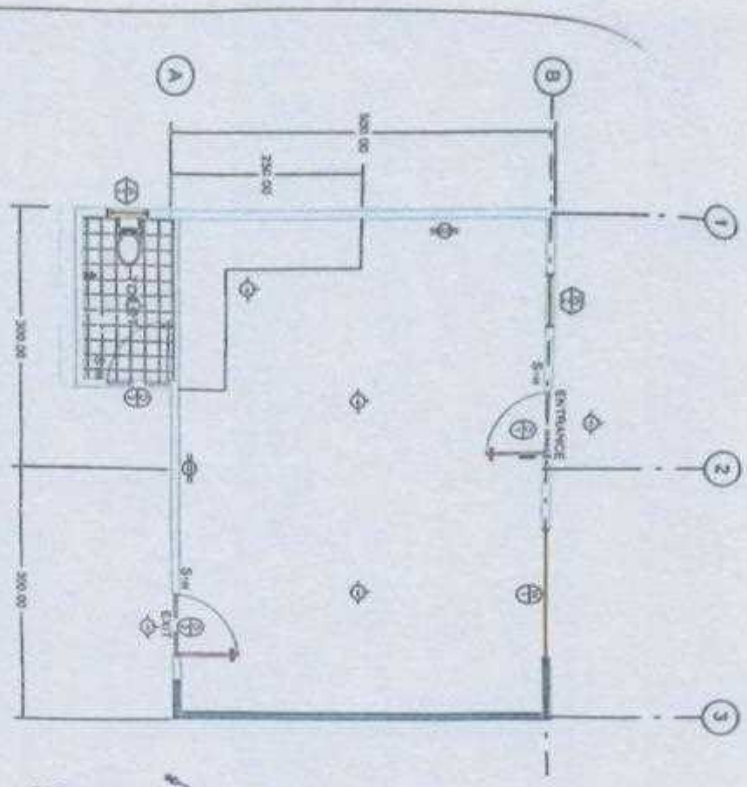
FINISH PLAN
SCALE: 1 : 1000 M

NOTE
ALL DIMENSIONS ARE IN CENTIMETERS UNLESS OTHERWISE SPECIFIED

of the Philippines NT OF AGRICULTURE Suzara Sta. Balara City	Project Title Construction of Processing Kitchen	Prepared by ENGR. RICHARD R. ACEROS ENR (E-1511)	Checked & Reviewed by ENGR. THESSALYN B. LAMAS EP/ENGINEER III	Submitted by ENGR. RICHARD R. ACEROS Chief/RAID	Noted by MARCOS M. QUINAY Chief/Field Office/DA	Recommended by REBECCA M. MORALES RTD by Operations	Approved by ENGR. RICHARD R. ACEROS Regional Executive Director	Sheet Content Beam & Finish Plan	Sheet No. B 10
--------------------------------------------------------------------	--------------------------------------------------------	--------------------------------------------------------	----------------------------------------------------------------------	-------------------------------------------------------	-------------------------------------------------------	-----------------------------------------------------------	-----------------------------------------------------------------------	----------------------------------------	----------------------

Republic of the Philippines DEPARTMENT OF AGRICULTURE BPO ZONE, CAGARIAN, BAYAN CITY	Project Title: Construction of Processing Facility	Prepared by: ENGR. JONAS M. MELLOS ENGR. JONAS M. MELLOS	Checked & Reviewed by: ENGR. BRESSALYN B. LAMAS ENGR. BRESSALYN B. LAMAS	Submitted by: ENGR. JONAS M. MELLOS ENGR. JONAS M. MELLOS	Noted by: MICHAEL M. GUMABAY MICHAEL M. GUMABAY	Recommended by: REBECCA DANIELA REBECCA DANIELA	Approved by: ALAN J. SANGOLEN ALAN J. SANGOLEN Regional Executive Director	Sheet Count: 10	Sheet No. 10
--------------------------------------------------------------------------------------------	----------------------------------------------------------	----------------------------------------------------------------	--------------------------------------------------------------------------------	-----------------------------------------------------------------	-------------------------------------------------------	-------------------------------------------------------	-------------------------------------------------------------------------------------	--------------------	-----------------

ELECTRICAL LAY-OUT PLAN
NOT TO SCALE



LEGEND

SYMBOLS		DESCRIPTION
◆	1.5M LED LIGHT	
⊕	POWER OUTLET, SINGLE	
⊕	PANEL BOARD	
⊕	ONE WAY SWITCH	
⊕	3 WAY SWITCH (1 WAY)	
—		ELECTRICAL WIRE

- GENERAL NOTES:**
1. ALL ELECTRICAL INSTALLATION SHALL BE DONE IN ACCORDANCE WITH THE RULES AND REGULATIONS ARE WITHIN THE APPLICABLE PROVISIONS OF LATEST EDITION OF THE NATIONAL ELECTRICAL CODE.
 2. TYPES OF ELECTRICAL WIRE TYPE SHALL BE 20# FOR TL, 3 PHASE OR SINGLE PHASE, 3 WIRE SYSTEM 60-42, AND SHALL BE ONLY SERVICE GROUP WIRE TO THE BUILDING.
 3. METHOD OF WIRING SHALL BE PER FOR BOTH EXPOSED AND CONCEALED WORK. THE WIRING SHALL BE IN RIGID STEEL CONDUIT. VERTICALLY STANDING SIZE OF WIRE SHALL BE ON LOCAL CODES.
 4. ALL WALL OUTLET SHALL BE INSTALLED AT THE FOLLOWING HEIGHT ABOVE FINISHED FLOOR LEVEL, UNLESS OTHERWISE SPECIFIED:
 - A. WALL SWITCHES 1.40 MTS
 - B. CONVENIENCE OUTLET 1.40 MTS
 - C. PANEL BOARD 1.80 MTS
 - D. WELDING MACHINE OUTLET 1.40 MTS
 5. ALL MATERIALS AND EQUIPMENT SHALL BE NEW AND OF APPROVED TYPE TO BOTH LOCATION AND PURPOSE INTENDED.
 6. ALL CONVENIENCE RECEPTACLE CONDUIT HOLES SHALL BE WIRING NOT LESS THAN 3 SAID SAID CONDUIT CONDUIT, UNLESS OTHERWISE INDICATED IN THE PLAN.
 7. ALL LIGHTING AND POWER PANEL BOARD SHALL BE CIRCUIT BREAKER TYPE SOLO ON OR AS INDICATED ON THE PLAN.
 8. ALL OUTDOOR INSTALLATION SHALL BE WEATHERPROOF.
 9. UNLESS OTHERWISE SPECIFIED, JUNCTION AND UTILITY BOXES SHALL BE PROVIDED WHETHER REQUIRED ALTHOUGH SUCH BOXES ARE NOT SHOWN ON THE PLAN.
 10. ALL ELECTRICAL WORK HEREIN SHALL BE DONE UNDER THE DIRECT AND IMMEDIATE SUPERVISION OF A LICENSED ELECTRICAL ENGINEER OR MASTER ELECTRICIAN.
 11. PROVISION OF GENERATOR SETS IS OPTIONAL FOR THE FINISHERS BUILDING. HOWEVER, TO MAINTAIN THE PROPER ENVIRONMENT THROUGH COOLING, MAINTAIN SUPPLY OF WATER TO ANALYS, AND KEEPING THE LIGHTS ON, GENERATOR IS NECESSARY TO PROVIDE THE POWER NEEDED.

NOTE:
ALL DIMENSIONS ARE IN CENTIMETERS UNLESS OTHERWISE SPECIFIED