



DEPARTMENT OF AGRICULTURE  
CARIAGA REGION  
CAPITAL OFFICE, TAGBINA CITY  
TEL. NO. (085) 542-9172 (FAX NO.: (085) 541-6114)

REQUEST FOR QUOTATION

DATE: \_\_\_\_\_  
AMOUNT: \_\_\_\_\_

Name of Company: \_\_\_\_\_  
Address: \_\_\_\_\_  
City: \_\_\_\_\_

PLEASE PRINT YOUR OFFER PRICE INCLUSIVE OF TAXES IN THE BUYER'S COPY, SUBJECT TO THE GENERAL CONDITIONS BELOW, BEARING THE ADDRESS AND OR DESTINY, DURING YOUR QUOTATION ONLY SUBJECT TO YOUR REPRESENTATIVE FOR INFORMATION, BIDS MUST BE SEALED IN A BID ENVELOPE MARKED WITH THE REFERENCE NO. (FAR) 24-07-RES171

  
ABEL F. WASAS  
Chairman, Bids and Awards Committee

ITEM NO.	ITEM & DESCRIPTION	UNIT	QUANTITY	UNIT COST	TOTAL COST
	Labor & Materials for the Construction of Wheel Bath at Tagbina Research and Experiment Station at Maglambing, Tagbina, Surigao del Sur	lot	1		
	Pls see attached POW & DED				

ABC: 500,000.00  
Source of fund: Livestock Banner

GENERAL CONDITIONS:

- All offers must be accompanied/brought in trip.
- Lowest priced bidder shall be the contractor to be awarded the contract.
- Contract shall be for a period of six (6) months for services to be rendered, non (1) year for materials from date of acceptance by procuring entity.
- Price should show in full a receipt of constant price.
- Contractor shall be responsible for all taxes, duties, and other charges, including but not limited to the contractor's tax identification certificate and all other applicable taxes.
- Contractor shall be responsible for the procurement of all materials and services.
- Contractor shall be responsible for the procurement of all materials and services.

After having carefully read and accepted your General Conditions, if we quote on the basis of prices shown above.

\_\_\_\_\_  
Authorized Signature of Contractor

\_\_\_\_\_  
Printed Name/Signature of Company

\_\_\_\_\_  
Tax No. / C.T. No. / Other address

\_\_\_\_\_  
Date



DEPARTMENT OF AGRICULTURE

CARAGA REGION  
CAPITOL SITE, BUTUAN CITY

CONSTRUCTION OF WHEEL BATH

Togbina RES, Togbina, Surigao del Sur

Republic of the Philippines  
Department of Agriculture  
TA No. 599-15-2002, Tapanan, Nueva Ecija



Republic of the Philippines  
DEPARTMENT OF AGRICULTURE  
Cesar Basco  
Lizardo S. Basco, Sr.  
Pinar Serrano

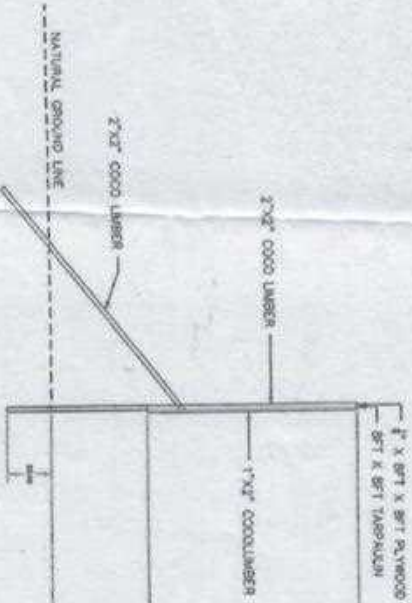
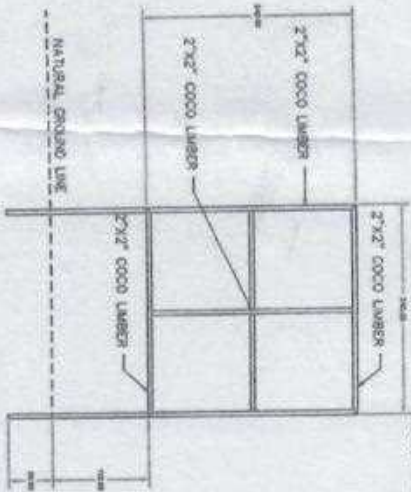
Project Name	Project Data		Project Status			Date of Completion
	Start	Target end/Completion	Percentage Actual in Date	Cost Completed	Months	
28.0.0						

For protection or completion about this project, please contact Regional Office or Office which the work pertains on this project.  
DVA Regional Office No. One - MGC BARRAS  
Address: SANTIAGO ROAD, CANTON, PAMPANGA  
Contact No.: 0297-21222 or 0297-21222/21222

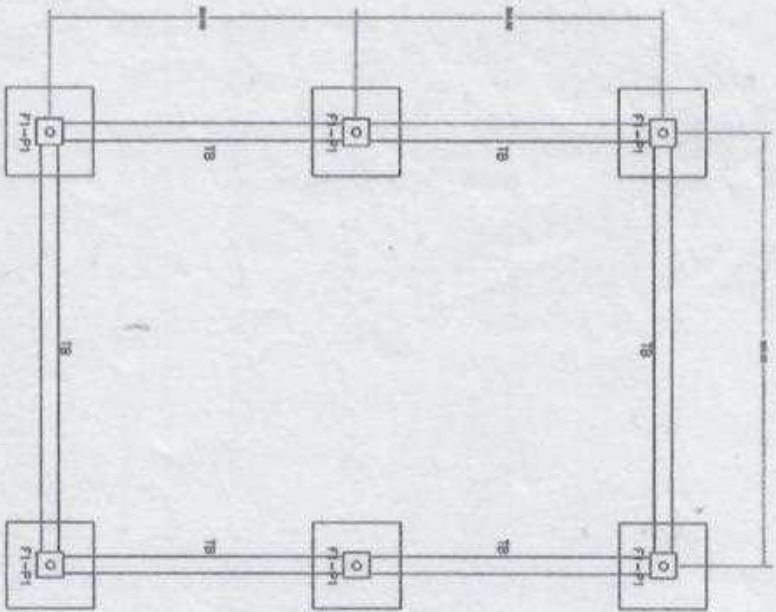
FONT COLOR : BLACK  
RESOLUTION : 70 DPI  
FONT : HELVETICA  
FONT SIZE : 14  
SUB-INFORMATION : 1"

### PROJECT BILLBOARD DETAILS NOT TO SCALE

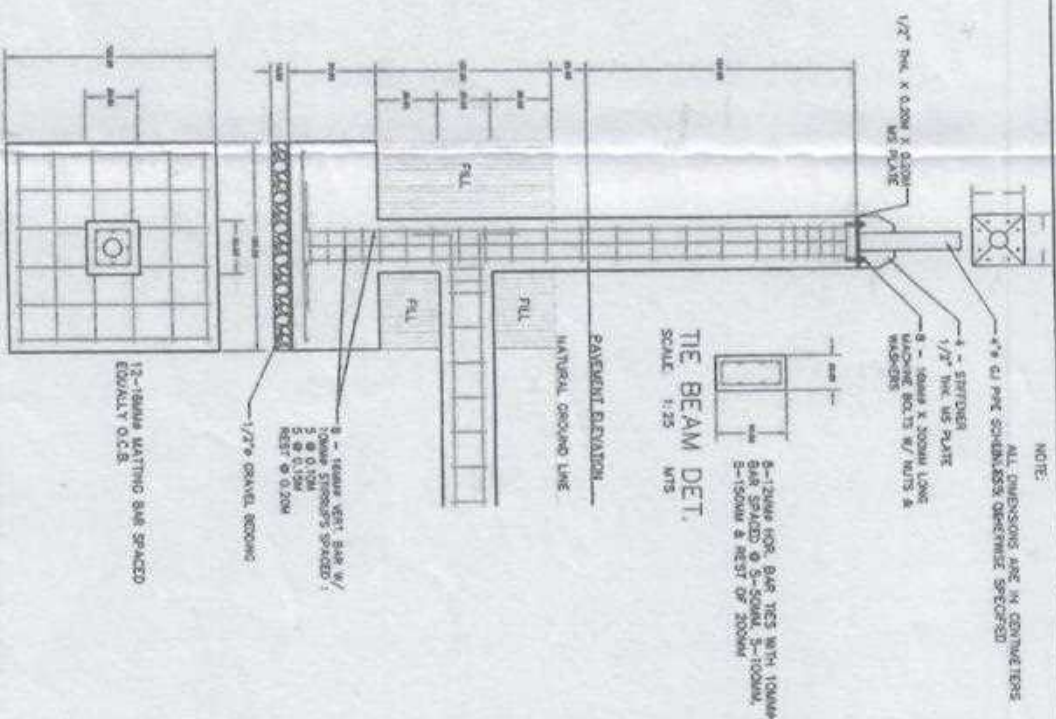
Republic of the Philippines Department of Agriculture RFO XII, Capitol Site, Butuan City	Project Title Construction of Urban Location: BCS-Topong 505	Prepared by [Signature]	Checked & Reviewed by [Signature] DINO BRUNDA LIM B. LIMAS PROJECT MANAGER II	Submitted by [Signature]	Noted by [Signature] EZEQUIEL F. DOMINIGOS AGRI. & ANIMALS CARE RESEARCH DIVISION	Recommended by [Signature] DINO BRUNDA LIM B. LIMAS PROJ. MGR. & SUPERVISOR	Approved by [Signature] ENRIQUE M. ORATE, JR. REGIONAL EXECUTIVE DIRECTOR	Sheet Content: Sheet No. 1 of 6
------------------------------------------------------------------------------------------------	-----------------------------------------------------------------------	----------------------------	----------------------------------------------------------------------------------------	-----------------------------	--------------------------------------------------------------------------------------------	--------------------------------------------------------------------------------------	------------------------------------------------------------------------------------	---------------------------------



NOTE:  
ALL DIMENSIONS ARE IN CENTIMETERS  
UNLESS OTHERWISE SPECIFIED

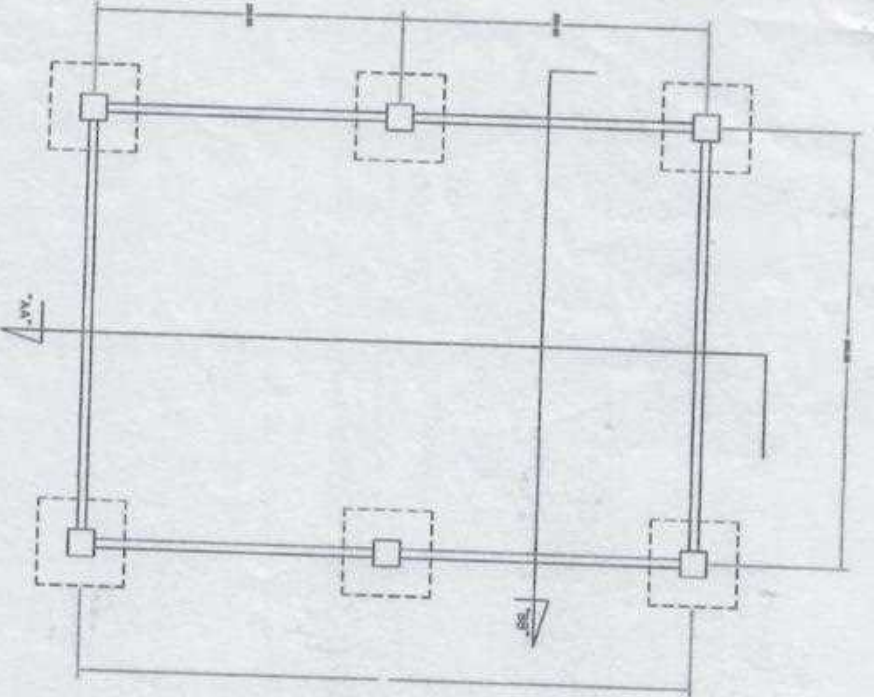
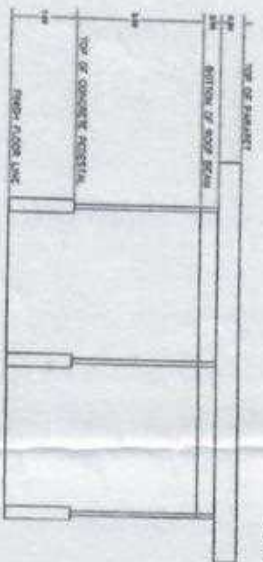
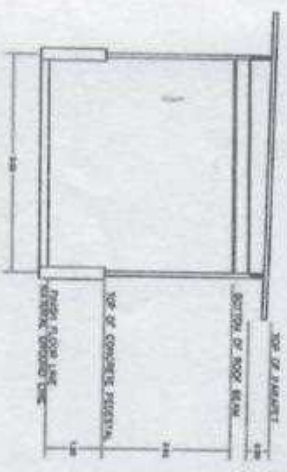
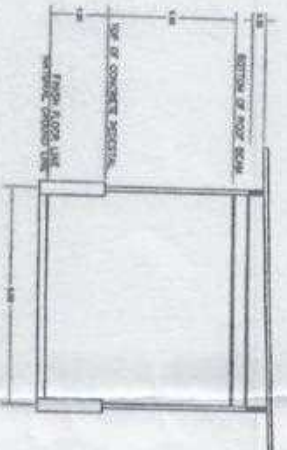


FOOTING (F1), PEDESTAL (P1) & TIE BEAM (TB) DET.  
SCALE 1:25 MTS



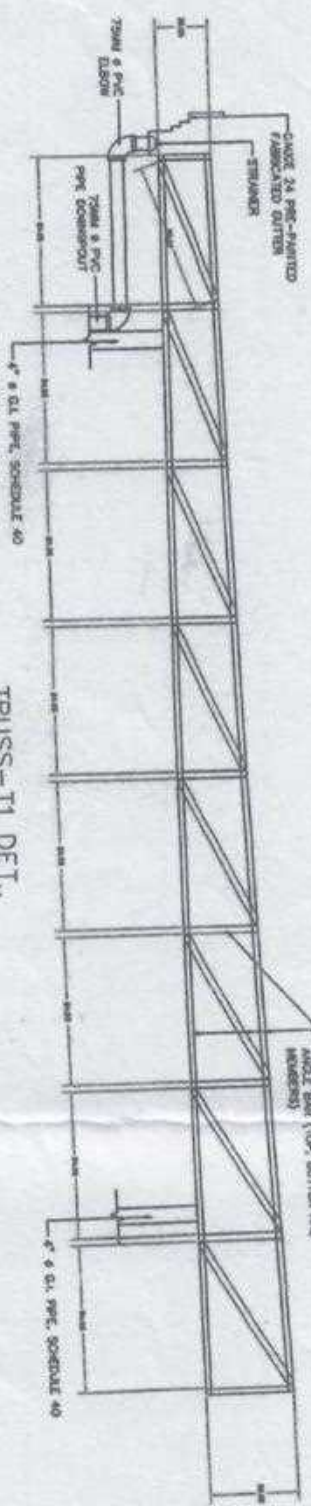
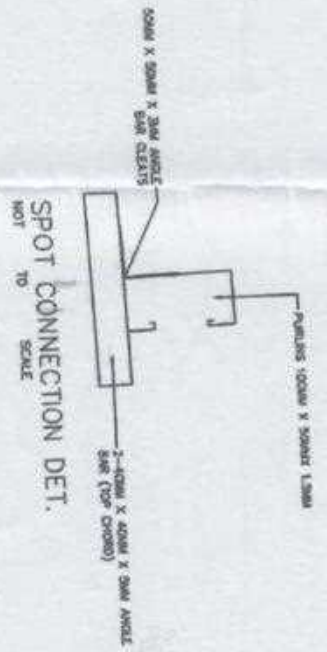
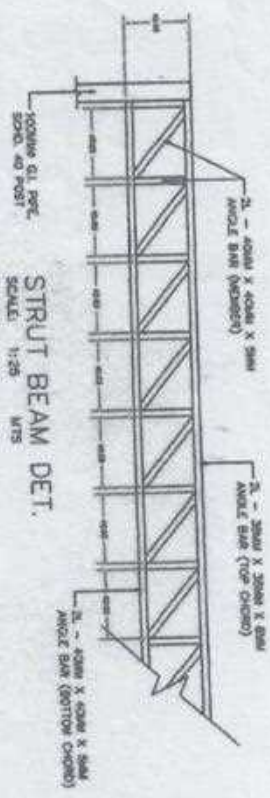
Republic of the Philippines DEPARTMENT OF AGRICULTURE PRO. XI, Central Sine, Division CITY	Project Title Construction of meat bath Location: REC-Togina SOS	Prepared by ENGR. S. M. ROSAS ENGR. ENRIQUE ENRIQUE	Checked & Released by ENGR. MESSIA L. M. B. UMAY ENGR. ENRIQUE	Supervised by ENGR. ENRIQUE	Noted by ENGR. ENRIQUE	Recommended by ENGR. ENRIQUE	Approved by ENGR. ENRIQUE	Sheet Content Foundation Plan F1, P1 & TB det.	Sheet No. 2 3
-----------------------------------------------------------------------------------------------------	------------------------------------------------------------------------------	--------------------------------------------------------------	----------------------------------------------------------------------	--------------------------------	---------------------------	---------------------------------	------------------------------	------------------------------------------------------	---------------------

NOTE:  
ALL DIMENSIONS ARE IN CENTIMETERS  
UNLESS OTHERWISE SPECIFIED



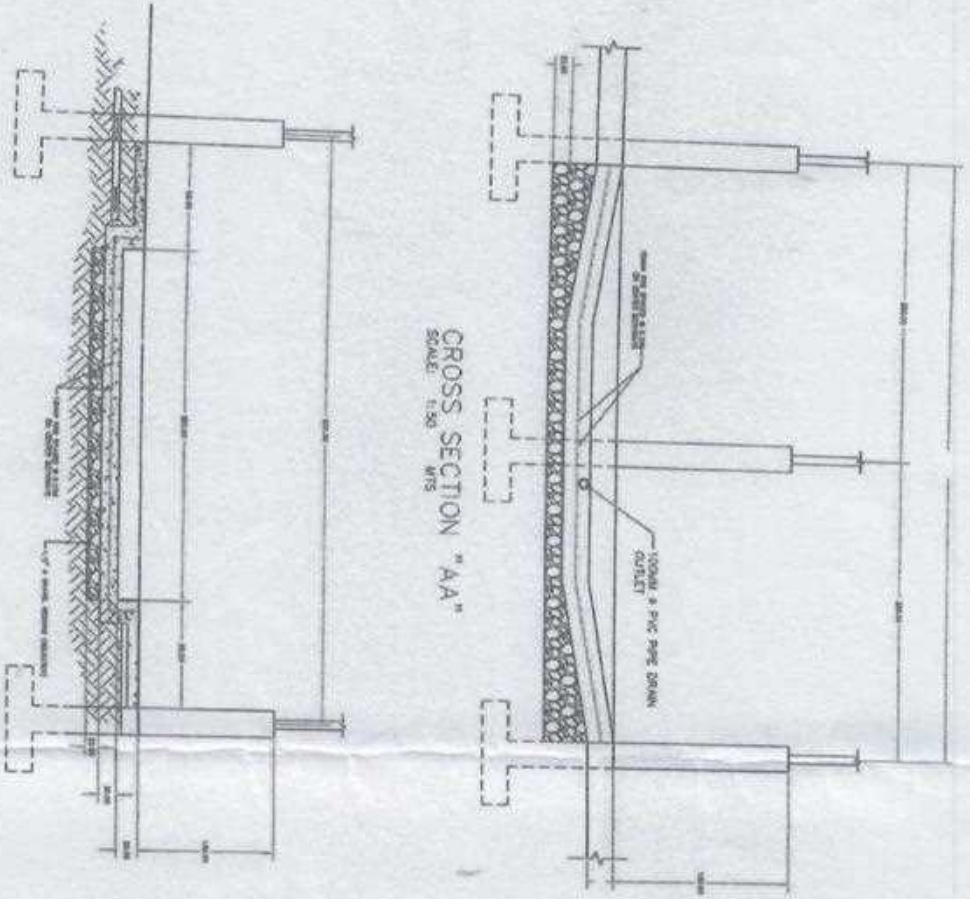
Republic of the Philippines DEPARTMENT OF AGRICULTURE Bldg. No. 1, Capitol Site, Diliman CITY	Project Title Construction of New Bldg. Location: RES-Topona 005	Prepared by ENGR. JONAS S. MENDOZA	Checked & Reviewed by ENGR. JESSICA LYR B. LIMAS DRAWN BY ENGR. JESSICA LYR B. LIMAS	Submitted by ENGR. JONAS S. MENDOZA	Noted by ENGR. JONAS S. MENDOZA	Recommended by ENGR. JONAS S. MENDOZA	Approved by ENGR. JONAS S. MENDOZA	Sheet Content Floor Plan Front Elevation Rear Elevation	Sheet No. 3 of 5
--------------------------------------------------------------------------------------------------------	------------------------------------------------------------------------------	---------------------------------------	-----------------------------------------------------------------------------------------------	----------------------------------------	------------------------------------	------------------------------------------	---------------------------------------	------------------------------------------------------------------	---------------------------

NOTE:  
ALL DIMENSIONS ARE IN CENTIMETERS  
UNLESS OTHERWISE SPECIFIED



Republic of the Philippines DEPARTMENT OF AGRICULTURE 9870 NIA, Caridad Stn., Bulacan CITY	Project Title: Construction of mixed beach Location: MCS-Topchick, Cavite City	Prepared by: ENGR. ROBERTO S. MORALES ENGINEER II	Checked & Reviewed by: ENGR. GESSICA LYNN B. LAMAS ENGINEER III	Submitted by: ENGR. ROBERTO S. MORALES ENGINEER II	Noted by: ENGR. JOSE R. LARONCA Senior Research Division RTO for Research & Squadrations	Recommended by: ENGR. JOSE R. LARONCA Senior Research Division RTO for Research & Squadrations	Approved by: ENGR. CARLOS M. ORATE, JR. Regional Executive Director	Sheet Content: Sheet No. Truss T1 Det Spot Connection 4 8
-----------------------------------------------------------------------------------------------------	--------------------------------------------------------------------------------------------	---------------------------------------------------------	-----------------------------------------------------------------------	----------------------------------------------------------	---------------------------------------------------------------------------------------------------	---------------------------------------------------------------------------------------------------------	---------------------------------------------------------------------------	-----------------------------------------------------------------------

NOTE:  
ALL DIMENSIONS ARE IN CENTIMETERS  
UNLESS OTHERWISE SPECIFIED



LONGITUDINAL SECTION "BB"  
SCALE: 1:50  
M/S

CROSS SECTION "AA"  
SCALE: 1:50  
M/S

Republic of the Philippines DEPARTMENT OF AGRICULTURE 970 3rd, Capitol Site, Bulacan City	Project Title Construction of Mixed Cable Location: NCS-Tigayin SDS	Prepared by Engr. R. M. S. MEAS ENGR. S. M. S. MEAS	Checked & Reviewed by Engr. DRESSA LYN B. LUMAS ENGR. DRESSA LYN B. LUMAS	Sketched by Engr. R. M. S. MEAS ENGR. R. M. S. MEAS	Noted by Engr. R. M. S. MEAS ENGR. R. M. S. MEAS	Recommended by Engr. R. M. S. MEAS ENGR. R. M. S. MEAS	Approved by Engr. R. M. S. MEAS ENGR. R. M. S. MEAS	Sheet Content, Sheet No. Cross Section "AA" Construction Section "BB"	5 8
----------------------------------------------------------------------------------------------------	---------------------------------------------------------------------------------	-----------------------------------------------------------	---------------------------------------------------------------------------------	-----------------------------------------------------------	--------------------------------------------------------	--------------------------------------------------------------	-----------------------------------------------------------	-----------------------------------------------------------------------------------	--------