

**DEPARTMENT OF AGRICULTURE****Caraga Region**

Capitol Site, Butuan City

Tel. No: (085) 342-4092 Telefax No.: (085) 341-2114

REQUEST FOR QUOTATION

Date: _____

Quotation #: _____

Name of Company _____

TIN _____

Please quote your lowest price inclusive of taxes in the items/s listed, subject to the General Conditions below, stating the shortest time of delivery. Submit your quotation duly signed by your representative not later than 3 days upon receipt in sealed envelope marked with the reference no. (PR # 25-04-SP191)

ABUL F. WAGAS

Chairman, Bids and Awards Committee

ITEM NO.	ITEM & DESCRIPTION	BRAND	UNIT	QUANTITY	UNIT COST	TOTAL COST
	Labor and Materials and Installation of Two (2) story Container Van		unit	2		
	Specifications:					
	Prefab container van L 5950 mm x W 3,000 mm x H 2850 mm					
	Wall and ceiling :atleast 5 cm thick expanded polystyrene (EPS) insulation					
	Roofing : atleast 0.4mm color galvanized steel Tile					
	Flooring : atleast 18mm Magnesium Oxide (MGO) Board and PVC Floor Mat or its equivalent					
	frame dark grey color, wall white color					
	Doors (930mm x 1970 mm): First floor - sliding glass door with jamb with complete accessories (including lockset) Second floor: 1 white steel door w/ jamb w/ complete accessories (including lockset)					
	windows (930 mmx 1200mm) - 2 pcs per unit sliding aluminum glass window w/ frame and complete accessories					
	electrical works:					
	2 led lights atleast 15w including casing					
	4 outlets 2 gangs					
	1 switch every unit					
	1 main breaker with panel and connection to power source					
	stairs with hand railings and balcony					
	Pedestal should be line-up and equally levelled					
	Pedestal size: 30cm x 30cm - use 4 pcs- 12mm diameter vertical bar w/ 10mm diameter ties spaced @ 10 pcs @ 100mm & rest @ 200mm					
	Including services for the tracking loading/unloading of container van at site : DA Caraga Regional Office, Capitol Site, Butuan City					
	2024 Continuing Fund					

ABC: 500,000.00Source of fund: GASS/ILD**General Conditions:**

1. All entries must be typewritten/printed in ink.
2. Delivery period within _____ calendar days based on the contract.
3. Warranty shall be for a period of six (6) months for supplies & materials, one (1) year for equipment from date of acceptance by procuring entity.
4. Price validity shall be for a period of _____ calendar days
5. PhilGEPS Registration Certificate, Business Permit, DTI Certificate and Tax Registration Certificate shall be attached upon submission of the quotation, if applicable.
6. Bidders shall submit original brochures showing specification of the products being offered.
7. Winning bidder(s) from outside Butuan City must appear personally or sent authorized representative to signed contract and claimed payments.

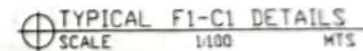
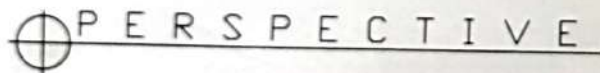
After having carefully read and accepted your General Conditions, I/We quote on the item at prices noted above.

Printed Name/Signature of Company _____

Name and Signature of Canvasser _____

Tel. No. / CP No. / email address _____

Date _____



A. Concrete
 $f'_c = 20.685 \text{ Mpa (3,000 psi)}$, minimum
 compressive
 strength of concrete at 28 days.
 B. Rebar
 $f_y = 275.80 \text{ Mpa (40,000 Psi)}$, minimum
 yield
 strength of reinforcing bars.

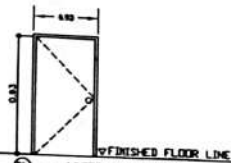
SCHEDULE OF COLUMN



TIES:
10mm @ SET 10 @ 10mm,
REST @ 200mm
TO CENTER

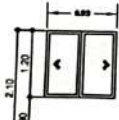
HEIGHT FROM NGL=0.50M

SCHEDULE OF DOORS

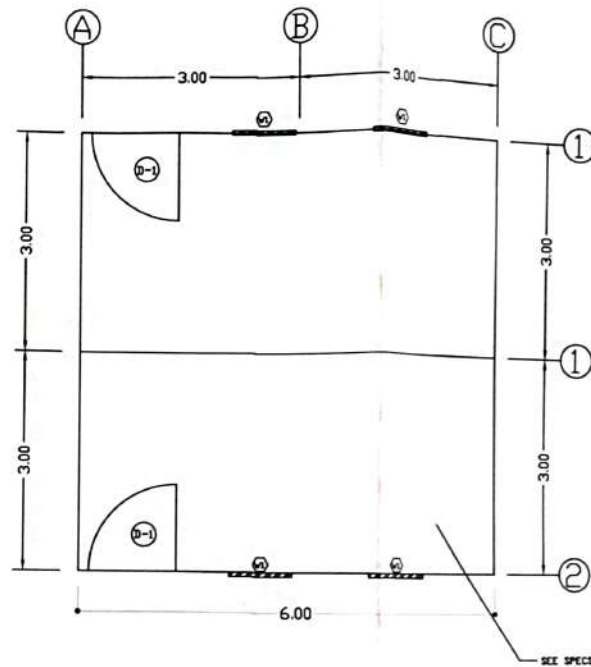


- WHITE STEEL DOOR
- WITH KNOBS AND JAMBS
- SINGLE SWING
- COMPLETE WITH HARDWARE AND ACCESSORIES
- 2 SETS REQUIRED

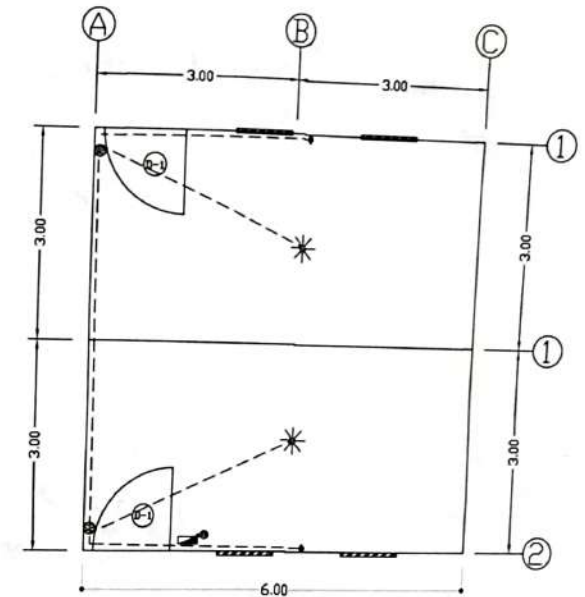
SCHEDULE OF WINDOWS



- ALUMINUM FRAMED
- SLIDING WINDOW WITH 1/2
- SMOKE GLASS PANEL
- ANALOG FINISH
- 4 SETS REQUIRED



FLOOR PLAN
SCALE 1:100 MTS



CO & LO LAYOUT
SCALE 1:100 MTS

LEGEND:

- panel board
- Circuit breaker
- 15 watts lighting fixture
- two gang switch
- circuit run
- duplex convenience outlet
- lighting conductor line
- outlet conductor line
- switch conductor line
- LD lighting outlet
- CO convenience outlet

CONTAINER VAN SPECIFICATIONS

- Modified 20 ft Container Van (6m x 3m x 2.8m)
- Condition: used, at least Class "A"
- Exterior and Interior color: White
- Wall & Ceiling: at least 5 cm thick Expanded Polystyrene (EPS) Insulation.
- Roofing: at least 0.4mm Color Galvanized Steel Tile
- Flooring: at least 18mm Magnesium Oxide (MGO) Board and PVC Floor Mat or its equivalent
- Windows: 4 units - (930x1200mm) Sliding Aluminum Glass window with frame and complete accessories
- Doors: 2 units - (930x1970mm) White Steel Door with Jamb with complete accessories (including lockset)
- Electrical Works:
Complete electrical layout/wiring including main panel board and connection to power source. With the ff. materials (in minimum quantity):
 - 2 sets LED Tube light, at least 15w including casing
 - 2 sets of 2-gang Switch
 - 4 sets of 3-gang Convenience Outlet
 - Circuit Breaker

SCHEDULE OF LOADS FOR ADDITIONAL BRANCH									
CIRCUIT	OUTLET			VOLTS	AMPERES	CB RATING	SIZE OF CONDUCTOR		
C1	LD	CO	STD	EXISTING	0	50A	PH. 10	PH. 10	PH. 10
SPARE									
SPARE									
TOTAL	2	2							

SCHEMATIC DIAGRAM

